

Brochure



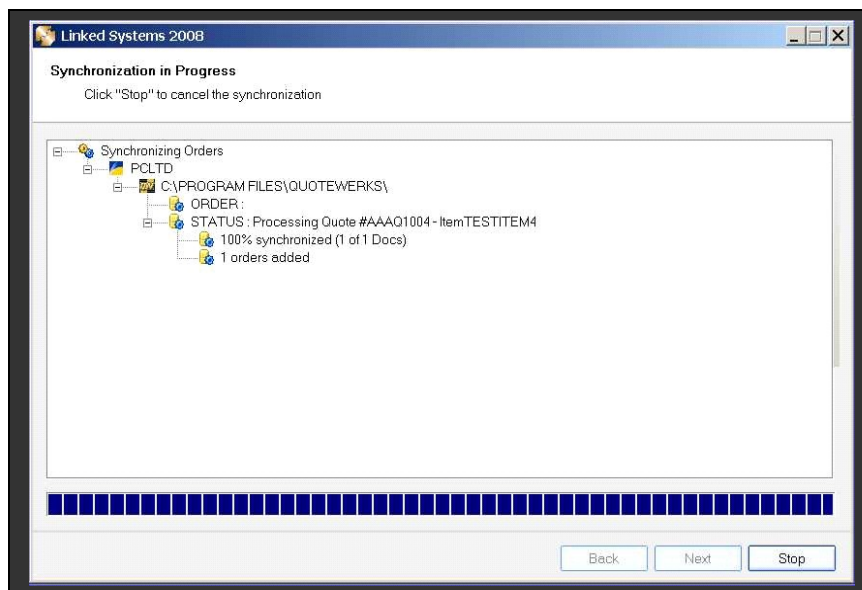
Linked Systems 2008 for QuoteWerks

Linked Systems 2008 is a robust middleware product that links QuoteWerks and Microsoft Great Plains Dynamics. This solution allows you to synchronize Great Plains Customers, Inventory and Orders between Great Plains and QuoteWerks. Linked Systems 2008 provides four major integration points:

- Synchronize Inventory bi-directionally
- Synchronize Customers bi-directionally
- Synchronize Quotes/Orders from QuoteWerks into Great Plains
- Lookup Great Plains Customer, Order and Inventory information from QuoteWerks

Synchronize Inventory Bi-Directionally

Linked Systems 2008 is designed for QuoteWerks users that need to access Great Plains Inventory within QuoteWerks. This product solves this problem by providing bi-directional synchronization of inventory between QuoteWerks and Great Plains. Linked Systems 2008 can import inventory from Great Plains into a QuoteWerks "Great Plains" Product Database including qty available, pricing and user definable information. This integration is bi-directional so new items added on QuoteWerks quotes/orders can also be added to Great Plains as you synchronize orders into the Great Plains SOP module. Users may also access real-time Great Plains inventory within QuoteWerks if they are connected to the server (not remote)



Import Great Plains Inventory into QuoteWerks

Add new Items on quotes to Great Plains

Add new customers on quotes to Great Plains

Export Quotes/Orders from QuoteWerks into Great Plains SOP Module

Lookup Great Plains customer, order and inventory information in real-time from QuoteWerks

Eliminate duplicate data entry

Great Plains Inventory can be accessed in real-time on server / workstation

Non-Real-time Great Plains Inventory can be accessed remotely on laptop

User can preview QuoteWerks quote/order before exporting to Great Plains

User can print invoices/pick tickets of all converted orders right from Link

Link can automatically generate customer number

Link handles billto/shipto address conflicts automatically

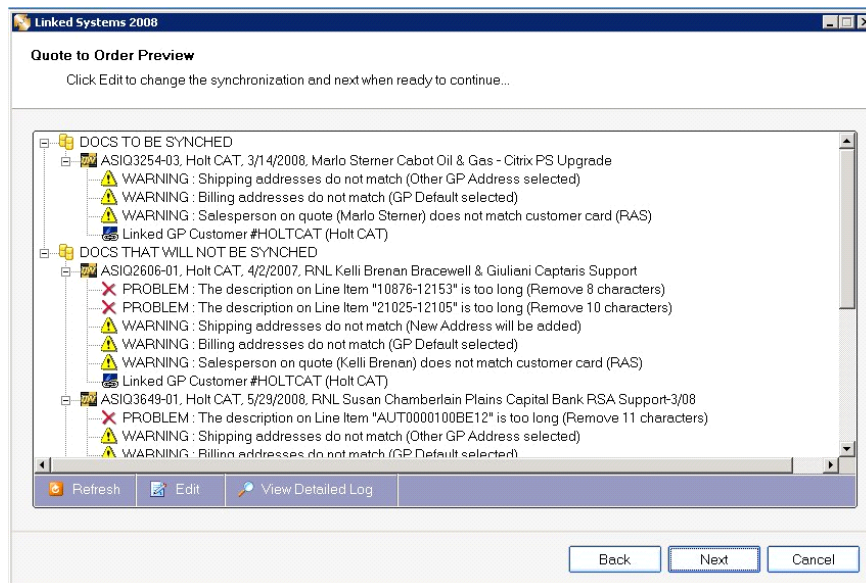
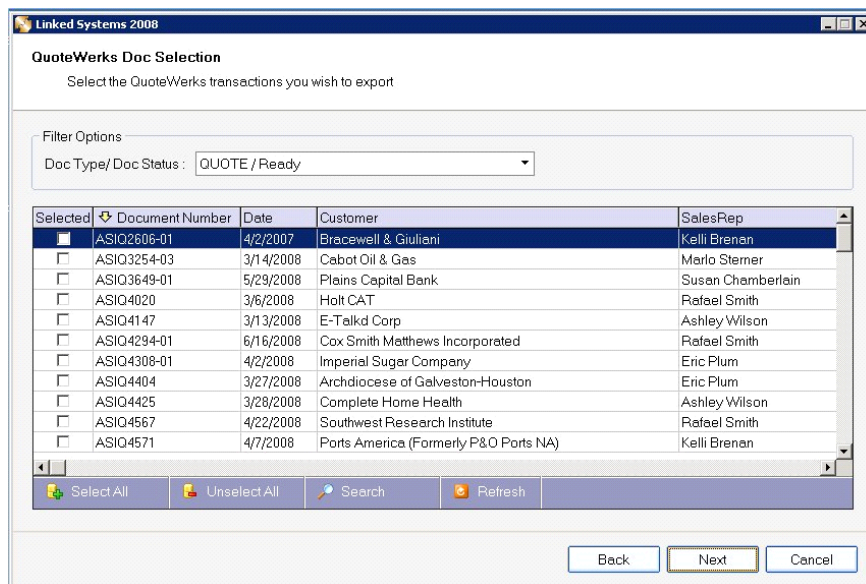
Link can change doc type in QuoteWerks after conversion to Great Plains

Synchronize Customers Bi-Directionally

New Customers can be added from QuoteWerks to Great Plains automatically when synchronizing orders. Users can also link customers from QuoteWerks to existing Great Plains when previewing orders to be synched. Customers can also be exported from Great Plains into the QuoteWerks Contact Manager if desired.

Synchronize Orders into Great Plains SOP

Orders can be synchronized in a batch. Users start the process by tagging the quote in QuoteWerks with a particular doc type. Accounting then displays a list of quotes and tags the quotes they wish to export. Accounting can preview the quotes and handle conflicts from within the wizard. Then the wizard will add the orders to Great Plains SOP in real-time and display a log.



Link is designed to be run / reviewed by one person on a daily basis

Link can also be scheduled to run automatically

Business rules control how data is synchronized

Multiple quotes can be exported to Great Plains at one time

Link will automatically warn you of any conflicts on each quote before export

Link will prevent quotes with missing data from being exported to Great Plains

Link supports multiple Great Plains companies

Lookup Great Plains customer history in real-time from QuoteWerks

Lookup Great Plains orders in real-time from QuoteWerks

Supports Great Plains Dynamics v10, v9, v8

Supports QuoteWerks 4.0, 4.0 Corporate (SQL) and QuoteWerks 3.0

Installation and configuration by Linked Systems, Inc is required

Link can be installed on any server/workstation.

Link requires installation of a Linked Systems SQL database on any server